



## ENGINE

Model	: ISUZU GI-4HK1X
Type	: Water-cooled, 4 cycle, 4 cylinders, line type direct injection, turbocharger, intercooler, electronic diesel engine
Power	: 161 HP (124 kW) @2000 rpm / SAE J1995 (Gross) : 151 HP (113 kW) @2000 rpm / SAE J1349 (Net)
Max. Torque	: 670 Nm @1600 rpm (Gross)
Displacement	: 5193 cc
Bore and Stroke	: 115 mm x 125 mm
Emission Class	: R96 (Stage-IIIa)

## UNDERCARRIAGE

X Type Lower Frame Construction Pentagon Box Type Chassis	
Shoe	: Triple grouser
No. Of Shoes	: 2 x 49
No. Of Lower Rollers	: 2 x 9
No. Of Upper Rollers	: 2 x 2
Track Tensioning	: Hydraulic Spring Tensioning

## CAB

<ul style="list-style-type: none"> <li>Improved operator's all round visibility</li> <li>Increased cabin internal space</li> <li>Use of six viscomount cabin mountings that dampen the vibrations</li> <li>High capacity A/C</li> <li>High resolution, led backlight, color LCD display</li> <li>Opera Control System</li> <li>Cooled storage room</li> <li>Glass holder, book and object storage pockets</li> <li>Pool type floor mat</li> <li>Improved operator's comfort through versatile adjustable seat</li> <li>Ergonomically redesigned cabin through relocated switch board, and re-styled travel pedals and joysticks.</li> </ul>
---

## SWING SYSTEM

Swing Motor	: Axial piston type integrated with shock absorber valves
Reduction	: 2 stage planetary gear box.
Swing Brakes	: Hydraulic multi disc type, automatic warnings
Swing Speed	: 12,60 rpm

## TRAVEL AND BRAKERS

Travel	: Fully hydrostatic
Travel Motors	: Axial piston type
Reduction	: 2 stage planetary gear
Travel Speed	
High Speed	: 5,8 km/h
Low Speed	: 3,8 km/h
Max. Drawbar Pull	: 18,310 kqf
Gradeability	: 35° (%70)
Parking Brake	: Hydraulic multi disc type
Ground Pressure (600mm Shoe)	: 0,50 kgf/cm <sup>2</sup>

## HYDRAULIC SYSTEM

<b>Main Pump</b>	
Type	: Double variable displacement axial piston pumps
Max. Flow	: 2 x 233 L/min
Pilot Pump	: Gear, 20 L/min
<b>Relief Valves</b>	
Attachment	: 350 kgf/cm <sup>2</sup>
Power Boost	: 370 kgf/cm <sup>2</sup>
Travel	: 350 kgf/cm <sup>2</sup>
Swing	: 306 kgf/cm <sup>2</sup>
Pilot	: 40 kgf/cm <sup>2</sup>
<b>Cylinders</b>	
Main Boom	: 2 x ø 120 x ø 85 x 1.300 mm
Stick Cylinder	: 1 x ø 135 x ø 95 x 1.520 mm
Bucket Cylinder	: 1 x ø 120 x ø 85 x 1.060 mm

## OPERA CONTROL SYSTEM

<ul style="list-style-type: none"> <li>Easy-to-use control panel and menu</li> <li>Improved fuel economy and productivity</li> <li>Maximum efficiency by selection of power and work modes</li> <li>Overheat prevention and protection system without interrupting the work</li> <li>Automatic powerboost switch-on and switch-off</li> <li>Automatic electric power-off</li> <li>Maintenance information and warning systek</li> <li>Error mode registry and warning system</li> <li>Ability to adjust hydraulic flow from Opera screen</li> </ul>	<ul style="list-style-type: none"> <li>Maintenance information and warning system</li> <li>Automatic powershift to improve performance</li> <li>Selection of multi-language on control panel.</li> <li>Real time monitoring of operational parameters such as pressure, temperature, engine load</li> <li>Anti-theft system with personal code</li> <li>Possibility to register 27 different operating hours</li> <li>Rear-view, arm-view camera (Optional)</li> <li>HIDROMEK Smartlink (Optional)</li> </ul>
---	---

## CAPACITY

Fuel Tank	: 345 L	Engine Cooling System	: 23,1 L
Hydraulic Tank	: 152 L	Engine Oil	: 14,5 L
Hydraulic System	: 285 L		

## ELECTRICAL SYSTEM

Voltage	: 24V
Battery	: 2 x 12V / 100 Ah
Alternator	: 24V / 50 A
Starting Motor	: 24V / 5 kW

## LUBRICATION

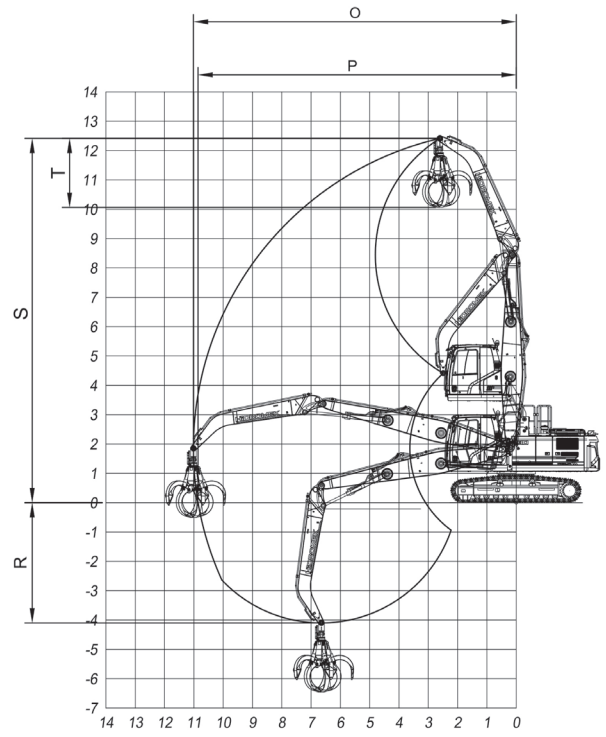
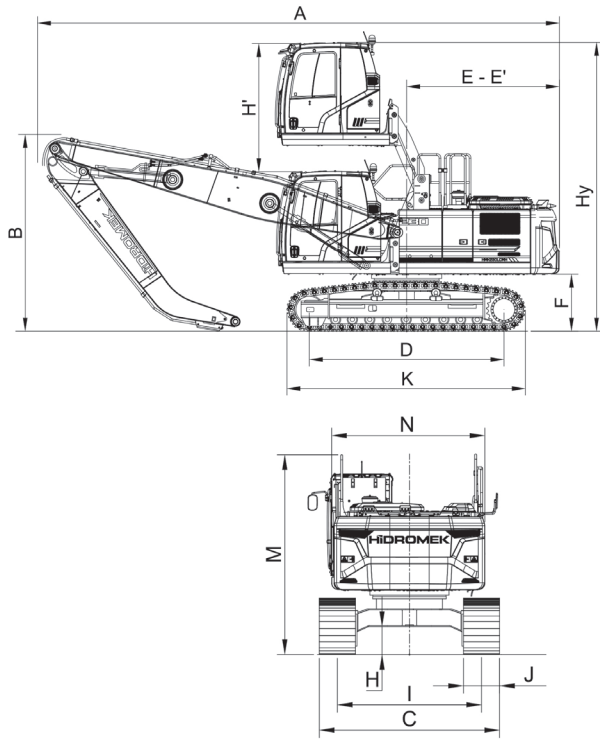
Centralized lubrication system is provided for lubrication all difficult-to-reach parts on the components, such as boom and arm

## OPERATING WEIGHT

Standard machine operating weight	: 23.600 kg
-----------------------------------	-------------

Operational weight, complying with the ISO 6016 standards, includes full fuel tank, hydraulic system and other liquids, 75kg operator weight and standard equipped machine weight. Optional equipments are not included.

# HMK230LCMH4



## GENERAL DIMENSIONS

Boom Dimension	6.60 mm
Arm Dimension (Dropnose/Arm)	4.60 mm
A - Overall Length	9.760 mm
B - Boom Height (Travel)	3.680 mm
C - Lower Frame Width	2.990 mm
D - Track Base Length	3.640 mm
E - Counterweight Distance	2.840 mm
E' - Counterweight Turning Radius	2.850 mm
F - Counterweight Clearance	1.065 mm
G - Crawler (Track) Height	935 mm
H - Ground Clearance	465 mm
H' - Cab Rising Distance	2.400 mm
Hy - Total Cab Height	5.380 mm
I - Track Gauge	2.390 mm
J - Shoe Width	600 mm
K - Lower Chassis Length	4.460 mm
M - Cab Height	3.010 mm
N - Upper Frame Width	2.740 mm

## WORKING DIMENSIONS

Boom Dimension	6.60 mm
Arm Dimension (Dropnose/Arm)	4.60 mm
O - Maximum Reach Distance	11.020 mm
P - Maximum Reach at Ground Level	10.860 mm
R - Maximum Depth	4.100 mm
S - Maximum Digging Height	12.410 mm
T - Grapple	2.350 mm



## HIDROMEK®

**FACTORY - HEAD OFFICE**  
 Ahi Evran OSB Mahallesi Osmanlı Caddesi No:1 06935 Sincan / ANKARA / TURKEY  
 Tel: (+90) 312 267 12 60 Fax: (+90) 312 267 12 39  
[www.hidromek.com](http://www.hidromek.com)

**Notice:**  
 Hidromek has the right to modify the specifications and design of the model indicated on this brochure without prior notice.