



**NEW!**

### ENGINE

Model	: ISUZU-GH-6HK1X
Type	: Water-cooled, 4 cycle, 6 cylinders, line type direct injection, turbocharger, intercooler, electronic diesel engine
Power	: 239 HP (178 kW) @1900 rpm / SAE J1995 (Gross)
Max. Torque	: 1014 Nm @1400 rpm (Gross)
Displacement	: 7790 cc
Bore and Stroke	: 115 mm x 125 mm
Emission Class	: R96 (Stage-IIIa)

### SUB-FRAME

X Type Lower Frame Construction Pentagon Box Type Chassis	
Shoe	: Triple grouser
No. Of Shoes	: 2 x 51
No. Of Lower Rollers	: 2 x 9
No. Of Upper Rollers	: 2 x 2
Full Trackguard	: 2 x 3
Track Tensioning	: Hydraulic Spring Tensioning

### CAB

<ul style="list-style-type: none"> <li>• Improved operator's all round visibility</li> <li>• Increased cabin internal space</li> <li>• Use of six viscomount cabin mountings that dampen the vibrations</li> <li>• High capacity A/C</li> <li>• High resolution, led backlight, color LCD display</li> <li>• Opera Control System</li> <li>• Cooled storage room</li> <li>• Glass holder, book and object storage pockets</li> <li>• Pool type floor mat</li> <li>• Improved operator's comfort through versatile adjustable seat</li> <li>• Ergonomically redesigned cabin through relocated switch board, and re-styled travel pedals and joysticks.</li> </ul>
---

### TRAVEL AND BRAKES

Travel	: Fully hydrostatic
Travel Motor	: Axial piston motor with 2 speed stages and inclined plate
Reduction	: Planetary gear system with 2 stages
Travel Speed	
High Speed	: 5,1 km/h
Low Speed	: 3,0 km/h
Max Traction	: 25.535 kgf
Gradeability	: 35° (70%)
Parking Brake	: Hydraulic, disc type with automatic warning
Ground pressure (600mm)	: 0,60 kgf/cm <sup>2</sup>

### LUBRICATION

Centralized lubrication system is provided for lubrication all difficult-to-reach parts on the components, such as boom and arm

### HYDRAULIC SYSTEM

<b>Main Pump</b>	
Type	: 2 axial piston type pumps with doublevariable displacement and inclined plate
Max. Flow Rate	: 2 x 259 L/min
Pilot Pump	: Gear type, 27 L/min
<b>Working Pressures</b>	
Cylinders	: 350 kgf/cm <sup>2</sup>
Power Boost	: 380 kgf/cm <sup>2</sup>
Travel	: 350 kgf/cm <sup>2</sup>
Swing	: 285 kgf/cm <sup>2</sup>
Pilot	: 40 kgf/cm <sup>2</sup>
<b>Cylinders</b>	
Boom	: 2 x ø 135 x ø 95 x 1.455 mm
Arm	: 1 x ø 150 x ø 105 x 1.760 mm
Bucket	: 1 x ø 135 x ø 95 x 1.195 mm

### OPERA CONTROL SYSTEM

<ul style="list-style-type: none"> <li>• Easy-to-use control panel and menu</li> <li>• Improved fuel economy and productivity</li> <li>• Selection of multi-language on control panel</li> <li>• Automatic powerboost switch-on and switch-off</li> <li>• Overheat prevention and protection system without interrupting the work</li> <li>• Automatic electric cut-off</li> <li>• Maintenance information and warning system</li> <li>• Error mode registry and warning system</li> <li>• GPRS satellite tracking system (Optional)</li> </ul>	<ul style="list-style-type: none"> <li>• Automatic preheater</li> <li>• Auto-Idle and automatic deceleration system</li> <li>• Automatic powershift to improve performance</li> <li>• Maximum efficiency by selection of power and work modes</li> <li>• Real time monitoring of operational parameters such as pressure, temperature, engine load</li> <li>• Anti-theft system with personal code</li> <li>• Possibility to register 27 different operating hours</li> <li>• Rear-view, arm-view camera (Optional)</li> </ul>
---	--

### SWING SYSTEM

Swing Motor	: Axial piston type integrated with shock absorber valves
Reduction	: 2 stage planetary gear box.
Swing Brakes	: Hydraulic multi disc type, automatic warnings
Swing Speed	: 10,4 rpm

### CAPACITY

Fuel Tank	: 475 L	Radiator	: 55 L
Hydraulic Tank	: 210 L	Engine Oil	: 38 L
Hydraulic System	: 395 L		

### ELECTRICAL SYSTEM

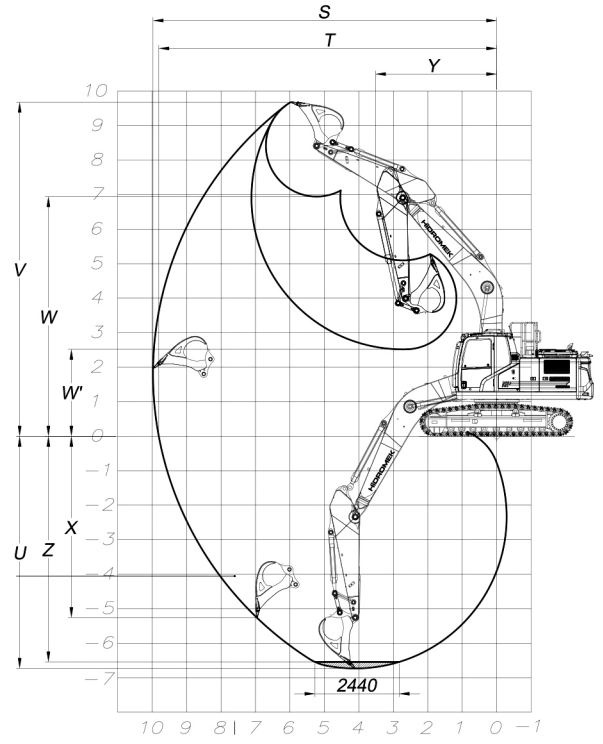
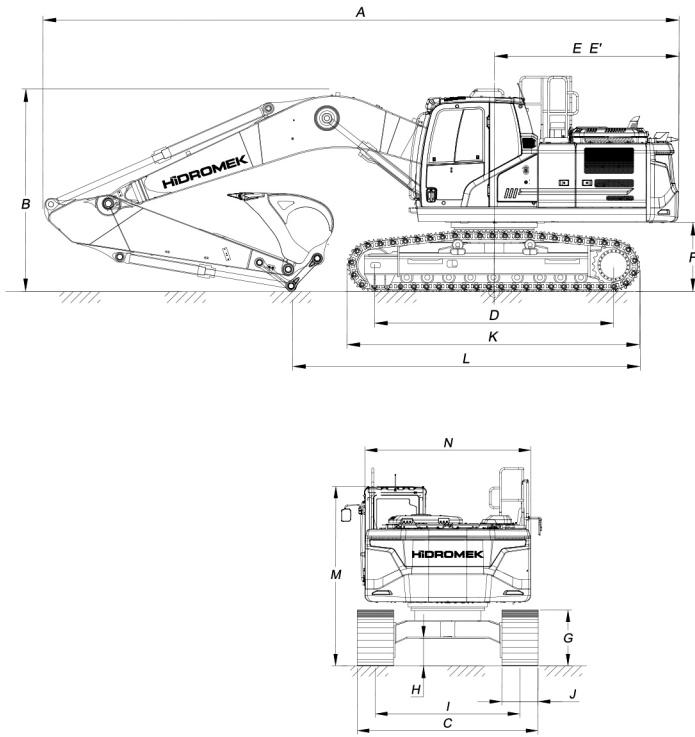
Voltage	: 24 V
Battery	: 2 x 12 V x 150 Ah
Alternator	: 24 V / 50 A
Starting Motor	: 24 V / 5 kw

### WEIGHT

Standard machine operating weight	: 31.600 kg
-----------------------------------	-------------

Operational weight, complying with the ISO 6016 standards, includes full fuel tank, hydraulic system and other liquids, 75 kg operator weight and standard equipped machine weight. Optional equipments are not included.

# HMK 310 LC H4



## GENERAL DIMENSIONS

Boom Dimension	6.280 mm		
Arm Dimension	2.100 mm	*2.500 mm	3.070 mm
A - Overall Length	10.930 mm	10.880 mm	10.790 mm
B - Overall Height (to top of boom)	3.580 mm	3.490 mm	3.320 mm
C - Overall Width	3.200 mm		
D - Idler Distance	4.030 mm		
E - Counterweight Distance	3.240 mm		
E' - Turning Radius	3.295 mm		
F - Upper Structure Ground Clearance	1.200 mm		
G - Crawler Height	1.070 mm		
H - Minimum Ground Clearance	505 mm		
I - Track Gauge	2.600 mm		
J - Shoe Width	600 mm		
K - Overall Length of Crawler	4.940 mm		
L - Length Over Ground	7.540 mm	6.780 mm	5.860 mm
M - Overall Height (to Top of Cab)	3.125 mm		
N - Upper Structure Width	3.000 mm		

## WORKING DIMENSIONS

Boom Dimension	6.280 mm		
Arm Dimension	2.100 mm	*2.500 mm	3.070 mm
S - Maximum Digging Reach	10.020 mm	10.370 mm	10.910 mm
T - Maximum Digging Reach at Ground Level	9.790 mm	10.150 mm	10.700 mm
U - Maximum Digging Depth	6.360 mm	6.760 mm	7.330 mm
V - Maximum Digging Height	9.860 mm	9.990 mm	10.290 mm
W - Maximum Dumping Clearance	6.870 mm	7.020 mm	7.300 mm
W' - Minimum Dumping Clearance	3.790 mm	3.310 mm	2.760 mm
X - Maximum Vertical Digging Depth	4.890 mm	5.140 mm	5.780 mm
Y - Minimum Swing Radius	4.440 mm	4.360 mm	4.280 mm
Z - Maximum Digging Depth (2440 mm level)	6.140 mm	6.560 mm	7.160 mm

\* Standard

## DIGGING PERFORMANCE

Standard Bucket Capacity (SAE)	1,6 m <sup>3</sup>
Bucket Digging Force (Power Boost) ISO	19.600 (21.300) kgf
Arm Crowd Force (Power Boost) ISO	16.400 (17.800) kgf

\* Standard



## HIDROMEK®

### FACTORY - HEAD OFFICE

Ahi Evran OSB Mahallesi Osmanlı Caddesi No:1 06935 Sincan / ANKARA / TURKEY  
 Tel: (+90) 312 267 12 60 Fax: (+90) 312 267 12 39  
[www.hidromek.com](http://www.hidromek.com)

**Notice:**  
 Hidromek has the right to modify the specifications and design of the model indicated on this brochure without prior notice.