


NEW!

ENGINE

Model	: ISUZU-4HK1X
Type	: Water cooled diesel engine, 4 cycles, 4 cylinders, line-type, direct injection, turbocharger and intercooler
Power	: 172 HP (128 kW) @2000 rpm / SAE J1995 (Brut)
Max. Torque	: 670 Nm @1600 rpm (Brut)
Displacement	: 5193 cc
Bore and Stroke	: 115 mm x 125 mm
Emission Class	: EU: Stage V

LOWER STRUCTURE (CHASSIS)

Chassis	: Box shaped, reinforced lower chassis, front dozer blade and rear outriggers (stabilizers) as standard figures.
Axles	: The pivot pin mounted front axle allows two options: 8° in each direction for best matching conditions, or could be locked at any desired position for perfect stability.
Tires	: 11,00 - 20 (16 pr)

CAB

- Improved operator's all round visibility
- Increased cabin internal space
- Use of six viscomount cabin mountings that dampen the vibrations
- High capacity A/C
- 8" touch TFT screen
- Opera Control System
- Cooled storage room
- Glass holder, book and object storage pockets
- Pool type floor mat
- Improved operator's comfort through versatile adjustable seat

STEERING SYSTEM

The "orbital" type steering system controls a steering cylinder located on the front axle. Minimum turning radius is 6.800 mm.

TRAVEL AND BRAKES

Travel	: Fully hydrostatic
Travel Motors	: Axial piston type
Reduction	: 2 stage planetary gear
Travel Speed	
High Speed	: 30 km/h
Low Speed	: 7,5 km/h
Max. Drawbar Pull	: 11.080 kgf
Gradeability	: 29° (%58)
Parking Brake	: Hydraulic, disc type with automatic warning
Service Brake	: Fully hydraulically operating disc type brakes with spring return, independent for front and rear axles.

LUBRICATION

Centralized lubrication system is provided for lubrication all difficult-to-reach parts on the components, such as boom and arm

HYDRAULIC SYSTEM

Main Pump	
Type	: 2 axial piston type pumps with double variable displacement and inclined plate
Max. Flow Rate	: 2 x 233 L/min
Pilot Pump	: Gear type, 20 L/min
Working Pressures	
Cylinders	: 330 kgf/cm ²
Power Boost	: 370 kgf/cm ²
Travel	: 370 kgf/cm ²
Swing	: 305 kgf/cm ²
Pilot	: 40 kgf/cm ²
Cylinders	
Boom	: 2 x ø 120 x ø 85 x 1.300 mm
Arm	: 1 x ø 135 x ø 95 x 1.520 mm
Bucket	: 1 x ø 120 x ø 85 x 1.060 mm

OPERA CONTROL SYSTEM

- Easy-to-use control panel and menu
- Improved fuel economy and productivity
- Maximum efficiency by selection of power and work modes
- Overheat prevention and protection system without interrupting the work
- Automatic powerboost switch-on and switch-off
- Automatic electric power-off
- Maintenance information and warning system
- Error mode registry and warning system
- Ability to adjust hydraulic flow from Opera screen
- Maintenance information and warning system
- Automatic powershift to improve performance
- Selection of multi-language on control panel.
- Real time monitoring of operational parameters such as pressure, temperature, engine load
- Anti-theft system with personal code
- Possibility to register 26 different operating hours
- Rear-view, arm-view camera (Optional)
- Hidromek Smartlink (Optional)

SWING SYSTEM

Swing Motor	: Axial piston type integrated with shock absorber valves
Reduction	: 2 stage planetary gear box.
Swing Brakes	: Hydraulic multi disc type.
Swing Speed	: 11,9 rpm

FILLING CAPACITIES

Fuel Tank	: 345 L	Engine Oil	: 19,3 L
Hydraulic Tank	: 160 L	Engine Cooling Sys.	: 33 L
Hydraulic System	: 318 L		

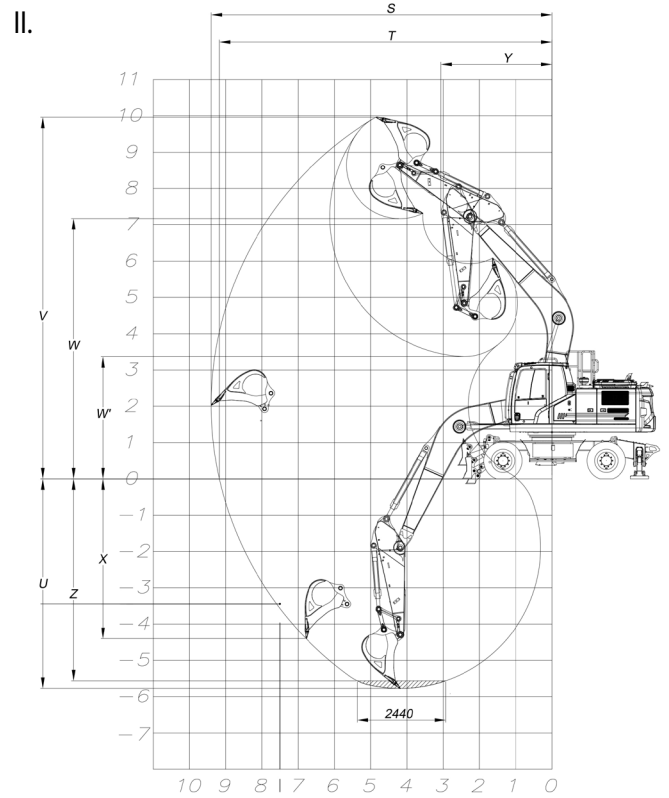
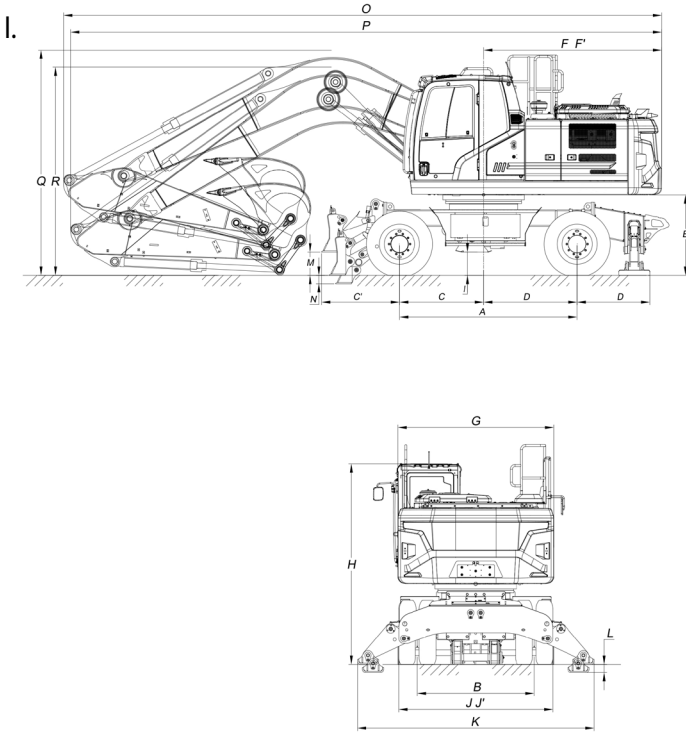
ELECTRICAL SYSTEM

Voltage	: 24 V
Battery	: 2 x 12 V / 100 Ah
Alternator	: 24 V / 50 A
Starting Motor	: 24 V / 5,0 kw

OPERATING WEIGHT

Standard machine operating weight	: 21.550 kg
-----------------------------------	-------------

Operational weight, complying with the ISO 6016 standards, includes full fuel tank, hydraulic system and other liquids, 75kg operator weight and standard equipped machine weight. Optional equipments are not included.



I. GENERAL DIMENSIONS

Boom Dimension	*5.600 mm	
Arm Dimension	*2.400 mm	2.920 mm
A - Axle Distance	2.850 mm	
B - Thread	2.114 mm	
C - Rotation Axis – Front Axle Distance	1.500 mm	
D - Rotation Axis – Rear Axle Distance	1.350 mm	
E - Upper Chassis to Ground Clearance	1.290 mm	
F - Counterweight Distance	2.850 mm	
F' - Counterweight Turning Radius	2.880 mm	
G - Upper Frame Width	2.500 mm	
H - Cab Height	3.200 mm	
I - Outrigger Ground Clearance	335 mm	
J - Dozer Blade Width	2.750 mm	
K - Outrigger Width (Overall)	4.023 mm	
L - Outrigger Digging Depth	130 mm	
M - Dozer Blade Ground Clearance	370 mm	
N - Dozer Blade Digging Depth	135 mm	
O - Overall Length/ Transport	9.510 mm	9.670 mm
P - Overall Length / Travel	9.570 mm	9.570 mm
Q - Boom Height / Travel	3.430 mm	3.790 mm
R - Boom Height / Transport	3.330 mm	3.320 mm

* Standard

II. WORKING DIMENSIONS

Boom Dimension	*5.600 mm	
Arm Dimension	*2.400 mm	2.920 mm
S - Maximum Digging Reach	9.400 mm	9.780 mm
T - Maximum Digging Reach at Ground Level	9.170 mm	9.560 mm
U - Maximum Digging Depth	5.760 mm	6.310 mm
V - Maximum Digging Height	9.970 mm	9.880 mm
W - Maximum Dumping Clearance	7.180 mm	7.200 mm
W' - Minimum Dumping Clearance	4.420 mm	4.610 mm
X - Maximum Vertical Digging Depth	3.230 mm	3.190 mm
Y - Minimum Swing Radius	5.580 mm	6.120 mm
Z - Maximum Digging Depth (2440 mm level)	5.560 mm	6.100 mm

* Standard

III. DIGGING PERFORMANCE

Standard Bucket Capacity (SAE)	0,9 m ³
Bucket Digging Force (Power Boost) ISO	15.000 (15.900) kgf
Arm Crowd Force (Power Boost) ISO	11.900 (12.600) kgf