



NEW!

ENGINE

Model	: ISUZU-6HK1X
Type	: Water-cooled, 4 cycle, 6 cylinders, line type direct injection, turbocharger, intercooler, electronic diesel engine
Power	: 281 HP (210 kW) @1900 rpm / SAE J1995 (Gross)
Max. Torque	: 1080 Nm @1500 rpm (Gross)
Displacement	: 7790 cc
Bore and Stroke	: ø 115 mm x 125 mm
Emission Class	: Stage V-EU

UNDERCARRIAGE

X Type Lower Frame Construction Pentagon Box Type Chassis	
Shoe	: Triple grouser
No. Of Shoes	: 2 x 50
No. Of Lower Rollers	: 2 x 9
No. Of Upper Rollers	: 2 x 2
Full Trackguard	: Complete
Track Tensioning	: Hydraulic Spring Tensioning

CAB

• Improved operator's all round visibility
• Increased cabin internal space
• Use of six viscomount cabin mountings that dampen the vibrations
• High capacity A/C
• High resolution, led backlight, color LCD display
• Opera Control System
• Cooled storage room
• Glass holder, book and object storage pockets
• Pool type floor mat
• Improved operator's comfort through versatile adjustable seat
• Ergonomically redesigned cabin through relocated switch board, and re-styled travel pedals and joysticks.

TRAVEL AND BRAKERS

Travel	: Fully hydrostatic
Travel Motors	: Axial piston type
Reduction	: 2 stage planetary gear
Travel Speed	
High Speed	: 5,0 km/h
Low Speed	: 2,9 km/h
Max. Drawbar Pull	: 30.470 kgf
Gradeability	: 35° (%70)
Parking Brake	: Hydraulic multi disc type
Ground pressure	: 0,72 kgf/cm ²

LUBRICATION

Centralized lubrication system is provided for lubrication all difficult-to-reach parts on the components, such as boom and arm

HYDRAULIC SYSTEM

Main Pump	
Type	: Double variable displacement axial piston pumps
Max. Flow	: 2 x 300 L/min
Pilot Pump	: Gear, 28,5 L/min
Relief Valves	
Attachment	: 350 kgf/cm ²
Travel	: 350 kgf/cm ²
Swing	: 285 kgf/cm ²
Pilot	: 40 kgf/cm ²
Cylinders	
Main Boom	: 2 x ø 145 x ø 100 x 1.510 mm
Stick Cylinder	: 1 x ø 170 x ø 120 x 1.735 mm
Bucket Cylinder	: 1 x ø 120 x ø 85 x 1.060 mm

OPERA CONTROL SYSTEM

• Easy-to-use control panel and menu	• Maintenance information and warning system
• Improved fuel economy and productivity	• Automatic powershift to improve performance
• Maximum efficiency by selection of power and work modes	• Selection of multi-language on control panel.
• Overheat prevention and protection system without interrupting the work	• Real time monitoring of operational parameters such as pressure, temperature, engine load
• Automatic powerboost switch-on and switch-off	• Anti-theft system with personal code
• Automatic electric power-off	• Possibility to register 26 different operating hours
• Maintenance information and warning system	• Rear-view, arm-view camera (Optional)
• Error mode registry and warning system	• Hidromek Smartlink (Optional)
• Ability to adjust hydraulic flow from Opera screen	

SWING SYSTEM

Swing Motor	: Axial piston type integrated with shock absorber valves
Reduction	: 2 stage planetary gear box.
Swing Brakes	: Hydraulic multi disc type, automatic warnings
Swing Speed	: 9,4 rpm

CAPACITY

Fuel Tank	: 565 L	Radiator	: 55 L
Hydraulic Tank	: 265 L	Engine Oil	: 36 L
Hydraulic System	: 470 L		

ELECTRICAL SYSTEM

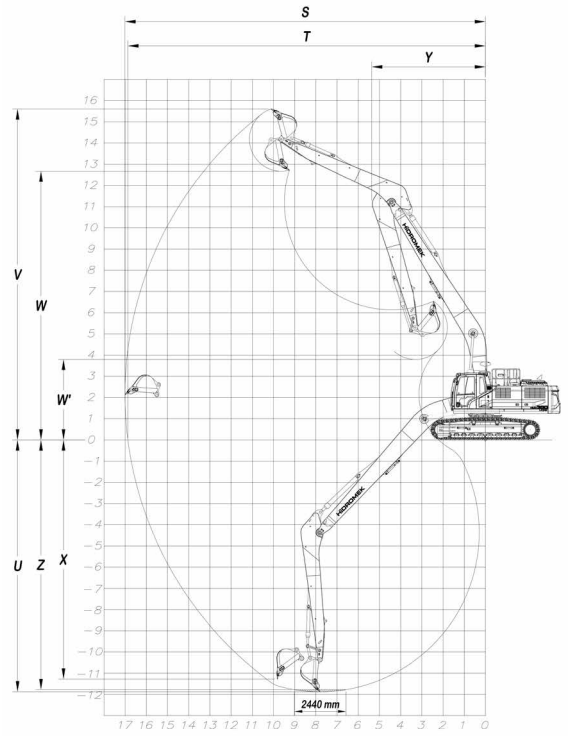
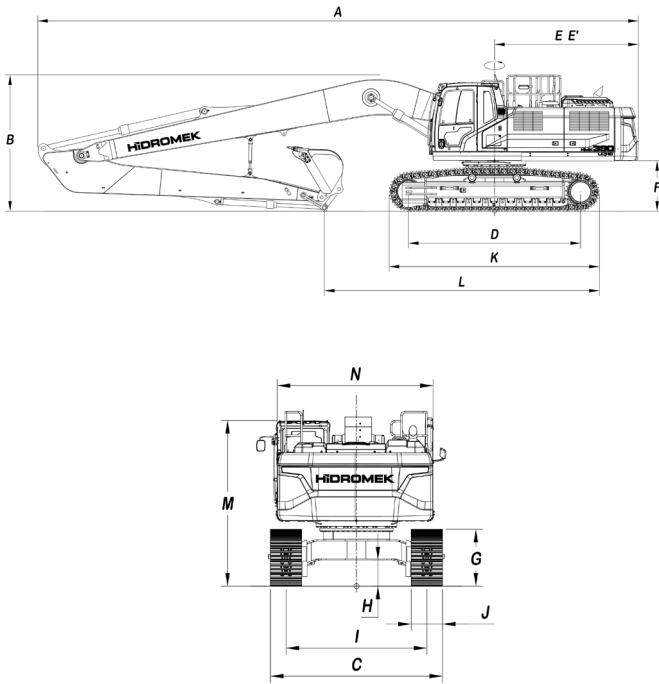
Voltage	: 24 V
Battery	: 2 x 12 V / 150 Ah
Alternator	: 24 V / 50 A
Starting Motor	: 24 V / 5 kw

OPERATING WEIGHT

Standard machine operating weight : 42.100 kg

Operational weight, complying with the ISO 6016 standards, includes full fuel tank, hydraulic system and other liquids, 75 kg operator weight and standard equipped machine weight. Optional equipments are not included.

HMK 390 LCLR H4



GENERAL DIMENSIONS

Boom Dimension	10.000 mm
Arm Dimension	6.000 mm
A - Overall length	14.840 mm
B - Overall height of boom	3.370 mm
C - Overall Width	3.500 mm
D - Tumbler distance	4.240 mm
E - Rear end length	3.570 mm
E' - Tail swing radius	3.590 mm
F - Counterweight clearance	1.250 mm
G - Crawler height	1.090 mm
H - Minimum ground clearance	505 mm
I - Track gauge	2.700 mm
J - Shoe width	800 mm
K - Crawler length	5.190 mm
L - Length on ground	6.790 mm
M - Cab height	3.190 mm
N - Upperstructure width	2.990 mm

WORKING DIMENSIONS

Boom Dimension	10.000 mm
Arm Dimension	6.000 mm
S - Max. digging reach	17.010 mm
T - Max. digging reach on ground	16.870 mm
U - Max. digging depth	11.870 mm
V - Max. cutting height	15.610 mm
W - Max. dumping height	12.680 mm
W' - Min. dumping height	3.790 mm
X - Max. vertical wall digging depth	11.280 mm
Y - Min. front swing radius	5.510 mm
Z - Maximum Digging Depth (2440 mm level)	11.770 mm

DIGGING PERFORMANCE

Standard Bucket Capacity (SAE)	1,0 m ³
Bucket digging force (power boost) ISO	10.400 kgf
Arm breakout force (power boost) ISO	7.300 kgf

* Standard



HIDROMEK®

FACTORY - HEAD OFFICE
 Ahi Evran OSB Mahallesi Osmanlı Caddesi No:1 06935 Sincan / ANKARA / TURKEY
 Tel: (+90) 312 267 12 60 Fax: (+90) 312 267 12 39
www.hidromek.com

Notice:
 Hidromek has the right to modify the specifications and design of the model indicated on this brochure without prior notice.