



ENGINE

Model	: ISUZU AI-4JJ1X
Type	: Water cooled, 4 cycle, 4 cylinders, line type direct injection, turbocharger, intercooler, electronic diesel engine
Power	: 123 HP (92 kW) @2200 rpm / SAE J1995 (Gross) : 113 HP (84,7 kW)@2200 rpm / SAE J1349 (Net)
Max. Torque	: 420 Nm @1800 rpm (Gross) : 393 Nm @1800 rpm (Net)
Displacement	: 2999 cc
Bore and Stroke	: 95,4 mm x 104,9 mm
Emission Class	: Stage IIIA / Tier 3 (EU/EPA)

LOWER STRUCTURE (CHASSIS)

Chassis	: Box shaped, reinforced lower chassis, front dozer blade and rear outriggers (stabilizers) as standard figures.
Axles	: The pivot pin mounted front axle allows two options: 8° in each direction for best matching conditions, or could be locked at any desired position for perfect stability.
Tires	: 10,00 - 20 (Solid Tire)

CAB

- Improved operator's all round visibility
- Increased cabin internal space
- Use of six viscomount cabin mountings that dampen the vibrations
- High capacity A/C
- Opera Control System
- Cooled storage room
- Glass holder, book and object storage pockets
- Pool type floor mat
- Improved operator's comfort through versatile adjustable seat

TRAVEL AND BRAKES

Travel	: Fully hydrostatic
Travel Motors	: Axial piston type
Reduction	: 2 stage planetary gear
Travel Speed	
High Speed	: 32 km/h
Low Speed	: 8 km/h
Max. Drawbar Pull	: 7.715 kqf
Gradeability	: 29° (%56)
Service Brake	: Independent front/rear style (double circuit) hydraulic power brake system. Pressure engaged/spring released type. Located "on hub" for ideal stability and safety.

STEERING SYSTEM

The "orbitrol" type steering system controls a steering cylinder located on the front axle. Minimum turning radius is 6,800 mm.

LUBRICATION

Centralized lubrication system is provided for lubrication all difficult-to-reach parts on the components, such as boom and arm

HYDRAULIC SYSTEM

Main Pump	
Type	: Double variable displacement axial piston pumps
Max. Flow	: 2 x 160 L/min
Pilot Pump	: Gear, 20 L/min
Relief Valves	
Attachment (Boom, Arm, Bucket)	: 330 kqf/cm ²
Power Boost	: 360 kqf/cm ²
Travel	: 360 kqf/cm ²
Swing	: 260 kqf/cm ²
Pilot	: 40 kqf/cm ²
Cylinders	
Main Boom	: 2 x ø 110 x ø 75 x 930 mm
Stick Cylinder	: 1 x ø 115 x ø 80 x 1.225 mm

OPERA CONTROL SYSTEM

- Easy-to-use control panel and menus
- Improved fuel economy and productivity
- Automatical electric power-off
- Selection of multi-language on control panel
- Maximum efficiency by selection of power and work modes
- Automatic preheating
- Anti-theft system with personal code
- Hidromek Smartlink (Optional)
- Cruise control travel speed
- Auto-Idle and automatic deceleration system
- Overheat prevention and protection system without interrupting the work
- Automatical powerboost switch-on and switch-off
- Maintenance information and warning system
- Rear-view, arm-view camera (Optional)
- Possibility to register 26 different operating hours
- Error mode registry and warning system
- Real time monitoring of operational parameters such as pressure, temperature, engine load

SWING SYSTEM

Swing Motor	: Axial piston type integrated with shock absorber valves
Reduction	: 2 stage planetary gear box.
Swing Brakes	: Hydraulic multi disc type.
Swing Speed	: 13 rpm

CAPACITY

Fuel Tank	: 270 L	Transmission	: 2,5 L
Hydraulic Tank	: 120 L	Engine Oil	: 16 L
Hydraulic System	: 235 L	Radiator	: 21 L
Swing Reduction	: 2,4 L		

ELECTRICAL SYSTEM

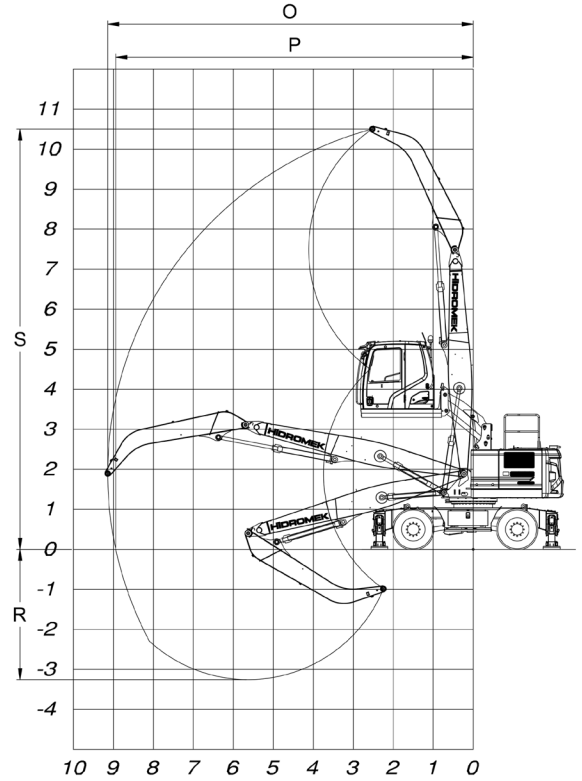
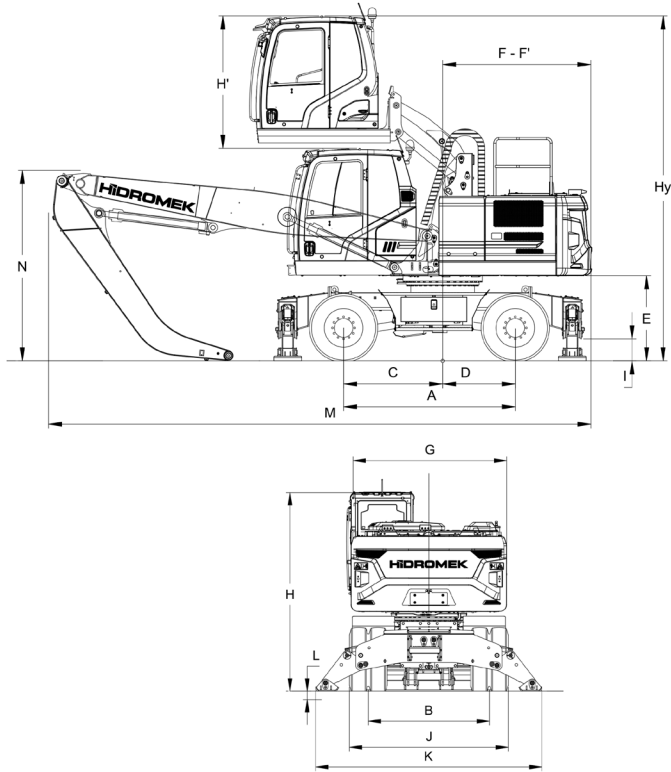
Voltage	: 24V
Battery	: 2 x 12 V x 100 Ah
Alternator	: 24V / 50 A
Starting Motor	: 24V / 4,0 kW

WEIGHT

Standard machine operating weight	: 17.900 kg
-----------------------------------	-------------

Operational weight, complying with the ISO 6016 standards, includes full fuel tank, hydraulic system and other liquids, 75kg operator weight and standard equipped machine weight. Optional equipments are not included.

HMK 140 W MH



GENERAL DIMENSIONS

Boom Dimension (MH Boom)	5.600 mm
Arm Dimension (Dropnose/MH Arm)	3.600 mm
A - Axle Distance	2.600 mm
B - Thread	1.944 mm
C - Rotation Axis – Front Axle Distance	1.500 mm
D - Rotation Axis – Rear Axle Distance	1.100 mm
E - Upper Chassis to Ground Clearance	1.295 mm
F - Counterweight Distance	2.250 mm
F' - Counterweight Turning Radius	2.340 mm
G - Upper Frame Width	2.500 mm
H - Cab Height	3.230 mm
H' - Cab Rising Distance	2.000 mm
Hy - Total Cab Height	5.230 mm
I - Outrigger Ground Clearance	360 mm
J - Width at Tires	2.494 mm
K - Outrigger Width (Overall)	3.620 mm
L - Outrigger Digging Depth	125 mm
M - Outrigger Pin Distance (on ground)	8.210 mm
N - Over Width OF O/R Extend (Below Ground)	2.880 mm

WORKING DIMENSIONS

Boom Dimension (MH Boom)	5.600 mm
Arm Dimension (Dropnose/MH Arm)	3.600 mm
O - Maximum Digging Reach	9.140 mm
P - Maximum Digging Reach at Ground Level	8.940 mm
R - Maximum Digging Depth	3.260 mm
S - Maximum Digging Height	10.500 mm
T - Grapple	1.500 mm

HIDROMEK

FACTORY - HEAD OFFICE

Ahi Evran OSB Mahallesi Osmanlı Caddesi No:1 06935 Sincan / ANKARA / TURKEY
Tel: (+90) 312 267 12 60 Fax: (+90) 312 267 12 39
www.hidromek.com

Notice:
Hidromek has the right to modify the specifications and design of the model indicated on this brochure without prior notice.