



NEW!

ENGINE

| | |
|-----------------|---|
| Model | : ISUZU-6UZ1X |
| Type | : Water-cooled, 4 cycle, 6 cylinders, line type, direct injection, turbocharger, intercooler, diesel engine |
| Power | : 362 HP (270 kW) @2000 rpm / SAE J 1995 (Gross) |
| Max. Torque | : 1650 Nm @1300 rpm (Gross) |
| Displacement | : 9839 cc |
| Bore and Stroke | : \varnothing 120 mm x 145 mm |
| Emission Class | : EU: Stage V |

UNDERCARRIAGE

| | |
|---|-------------------------------|
| X Type Lower Frame Construction Pentagon Box Type Chassis | |
| Shoe | : 3 grouser |
| No. Of Shoes | : 2 x 53 |
| No. Of Lower Rollers | : 2 x 9 |
| No. Of Upper Rollers | : 2 x 2 |
| Full Trackguard | : Complete |
| Track Tensioning | : Hydraulic Spring Tensioning |

CAB

| |
|---|
| <ul style="list-style-type: none"> Improved operator's all round visibility Increased cabin internal space Use of six viscomount cabin mountings that dampen the vibrations High capacity A/C High resolution, led backlight, color LCD display Opera Control System Cooled storage room Glass holder, book and object storage pockets Pool type floor mat Improved operator's comfort through versatile adjustable seat Ergonomically redesigned cabin through relocated switch board, and re-styled travel pedals and joysticks. |
|---|

TRAVEL AND BRAKERS

| | |
|-------------------|--|
| Travel | : Fully hydrostatic |
| Travel Motors | : Axial piston type |
| Reduction | : 3 stage planetary gear |
| Travel Speed | |
| High Speed | : 4,70 km/h |
| Low Speed | : 2,85 km/h |
| Max. Drawbar Pull | : 35,250 kgf |
| Gradeability | : 35° (%70) |
| Parking Brake | : Hydraulic multi disc type, integrated transmission |
| Ground pressure | : 0,90 kgf/cm ² |

LUBRICATION

Centralized lubrication system is provided for lubrication all difficult-to-reach parts on the components, such as boom and arm

HYDRAULIC SYSTEM

| | |
|----------------------|--|
| Main Pump | |
| Type | : Double variable displacement axial piston pumps |
| Max. Flow | : 2 x 346 L/min |
| Pilot Pump | : Gear Type, 28,5 L/min |
| Relief Valves | |
| Attachment | : 330 kgf/cm ² |
| Power Boost | : 355 kgf/cm ² |
| Travel | : 330 kgf/cm ² |
| Swing | : 300 kgf/cm ² |
| Pilot | : 40 kgf/cm ² |
| Cylinders | |
| Main Boom | : 2 x \varnothing 170 x \varnothing 115 x 1.650 mm |
| Stick Cylinder | : 1 x \varnothing 190 x \varnothing 130 x 1.870 mm |
| Ripper | : 1 x \varnothing 200 x \varnothing 140 x 940 mm |

OPERA CONTROL SYSTEM

| | |
|---|--|
| <ul style="list-style-type: none"> Automatic idling Selection of multi-language on control panel Improved fuel economy and productivity Automatical electric power-off Maximum efficiency by selection of power and work modes Error mode registry and warning system Hidromek Smartlink Automatic preheating Automatical powerboost (Optional) | <ul style="list-style-type: none"> Overheat prevention and protection system without interrupting the work Easy-to-use control panel and menus Rear-view, arm-view camera (Optional) Possibility to register 27 different operating hours Anti-theft system with personal code Real time monitoring of operational parameters such as pressure, temperature, engine load |
|---|--|

SWING SYSTEM

| | |
|--------------|---|
| Swing Motor | : Axial piston type integrated with shock absorber valves |
| Reduction | : 2 stage planetary gear box. |
| Swing Brakes | : Hydraulic multi disc type, automatic warnings |
| Swing Speed | : 8,3 rpm |

CAPACITY

| | | | |
|------------------|---------|------------|--------|
| Fuel Tank | : 655 L | Engine Oil | : 41 L |
| Hydraulic Tank | : 370 L | Radiator | : 65 L |
| Hydraulic System | : 615 L | Urea Tank | : 70 L |

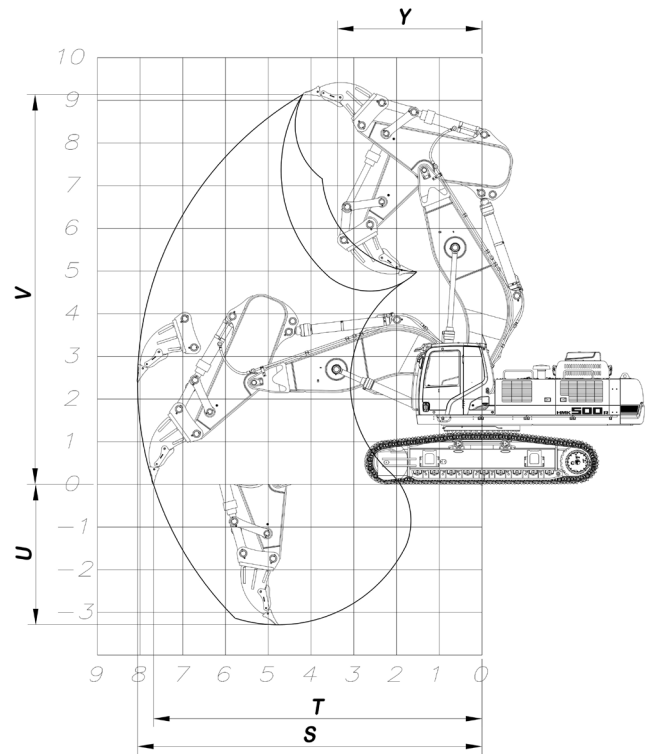
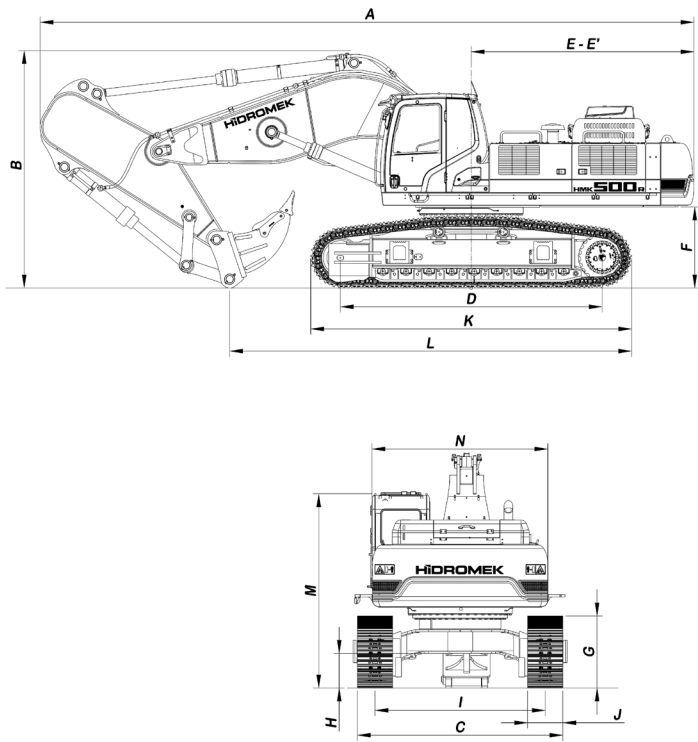
ELECTRICAL SYSTEM

| | |
|----------------|---------------------|
| Voltage | : 24 V |
| Battery | : 2 x 12 V x 165 Ah |
| Alternator | : 24 V / 50 A |
| Starting Motor | : 24 V / 5,5 kw |

OPERATING WEIGHT

| | |
|-----------------------------------|-------------|
| Standard machine operating weight | : 55.100 kg |
|-----------------------------------|-------------|

Operational weight, complying with the ISO 6016 standards, includes full fuel tank, hydraulic system and other liquids, 75kg operator weight and standard equipped machine weight. Optional equipments are not included.



GENERAL DIMENSIONS

| | |
|--------------------------------------|-----------|
| Boom Dimension | 5.100 mm |
| Arm Dimension | 1.800 mm |
| A - Overall Length | 11.130 mm |
| B - Overall Height (to top of boom) | 4.130 mm |
| C - Overall Width | 3.500 mm |
| D - Idler Distance | 4.400 mm |
| E - Counterweight Distance | 3.877 mm |
| E' - Turning Radius | 3.920 mm |
| F - Upper Structure Ground Clearance | 1.386 mm |
| G - Crawler Height | 1.228 mm |
| H - Minimum Ground Clearance | 600 mm |
| I - Track Gauge | 2.900 mm |
| J - Shoe Width | 600 mm |
| K - Overall Length of Crawler | 5.458 mm |
| L - Length Over Ground | 7.340 mm |
| M - Overall Height (to Top of Cab) | 3.324 mm |
| N - Upper Structure Width | 3.000 mm |

WORKING DIMENSIONS

| | |
|---|----------|
| S - Maximum Digging Reach | 7.940 mm |
| T - Maximum Digging Reach at Ground Level | 7.560 mm |
| U - Maximum Digging Depth | 3.280 mm |
| V - Maximum Digging Height | 8.930 mm |
| Y - Minimum Swing Radius | 3.640 mm |

DIGGING PERFORMANCE

| | |
|--|---------------------|
| Ripper Digging Force (Power Boost) ISO | 48.300 (52.700) kgf |
| Arm Crowd Force (Power Boost) ISO | 48.700 (53.200) kgf |