



## ENGINE

Model	: ISUZU-AI-4HK1X
Type	: Water cooled diesel engine, 4 cycles, 4 cylinders, line-type, direct injection, turbocharger and intercooler
Power	: 172 HP (128 kW) @2000 rpm / SAE J1995 (Gross) : 162 HP (121 kW) @2000 rpm / SAE J1349 (Net)
Max. Torque	: 677 Nm @1500 rpm (Gross) : 656 Nm @1500 rpm (Net)
Displacement	: 5193 cc
Bore and Stroke	: 115 mm x 125 mm
Emission Class	: Stage IIIA / Tier 3 (EU/EPA)

## LOWER STRUCTURE (CHASSIS)

Chassis	: Box shaped, reinforced lower chassis, front dozer blade and rear outriggers (stabilizers) as standard figures.
Axles	: The pivot pin mounted front axle allows two options: 8° in each direction for best matching conditions, or could be locked at any desired position for perfect stability.
Tires	: 11,00 - 20 (16 pr)

## CAB

<ul style="list-style-type: none"> <li>• Improved operator's all round visibility</li> <li>• Increased cabin internal space</li> <li>• Use of six viscomount cabin mountings that dampen the vibrations</li> <li>• High capacity A/C</li> <li>• 8" touch TFT screen</li> <li>• Opera Control System</li> <li>• Cooled storage room</li> <li>• Glass holder, book and object storage pockets</li> <li>• Pool type floor mat</li> <li>• Improved operator's comfort through versatile adjustable seat</li> </ul>
--

## STEERING SYSTEM

The "orbitrol" type steering system controls a steering cylinder located on the front axle. Minimum turning radius is 6.800 mm.

## TRAVEL AND BRAKES

Travel	: Fully hydrostatic
Travel Motors	: Axial piston type
Reduction	: 2 stage planetary gear
Travel Speed	
High Speed	: 31 km/h
Low Speed	: 7,5 km/h
Max. Drawbar Pull	: 11.120 kgf
Gradeability	: 29° (%56)
Parking Brake	: Hydraulic, disc type with automatic warning
Service Brake	: Fully hydraulically operating disc type brakes with spring return, independent for front and rear axles.

## LUBRICATION

Centralized lubrication system is provided for lubrication all difficult-to-reach parts on the components, such as boom and arm

## HYDRAULIC SYSTEM

Main Pump	
Type	: 2 axial piston type pumps with double variable displacement and inclined plate
Max. Flow Rate	: 2 x 233 L/min
Pilot Pump	: Gear type, 20,5 L/min
Working Pressures	
Cylinders	: 350 kgf/cm <sup>2</sup>
Power Boost	: 370 kgf/cm <sup>2</sup>
Travel	: 370 kgf/cm <sup>2</sup>
Swing	: 306 kgf/cm <sup>2</sup>
Pilot	: 40 kgf/cm <sup>2</sup>
Cylinders	
Boom	: 2 x ø 120 x ø 85 x 1.300 mm
Arm	: 1 x ø 125 x ø 85 x 1.170 mm

## OPERA CONTROL SYSTEM

<ul style="list-style-type: none"> <li>• Easy-to-use control panel and menu</li> <li>• Improved fuel economy and productivity</li> <li>• Maximum efficiency by selection of power and work modes</li> <li>• Overheat prevention and protection system without interrupting the work</li> <li>• Automatic powerboost switch-on and switch-off</li> <li>• Automatic electric power-off</li> <li>• Maintenance information and warning system</li> <li>• Error mode registry and warning system</li> <li>• Ability to adjust hydraulic flow from Opera screen</li> </ul>	<ul style="list-style-type: none"> <li>• Maintenance information and warning system</li> <li>• Automatic powershift to improve performance</li> <li>• Selection of multi-language on control panel.</li> <li>• Real time monitoring of operational parameters such as pressure, temperature, engine load</li> <li>• Anti-theft system with personal code</li> <li>• Possibility to register 26 different operating hours</li> <li>• Rear-view, arm-view camera (Optional)</li> <li>• Hidromek Smartlink (Optional)</li> </ul>
---	---

## SWING SYSTEM

Swing Motor	: Axial piston type integrated with shock absorber valves
Reduction	: 2 stage planetary gear box.
Swing Brakes	: Hydraulic multi disc type.
Swing Speed	: 11,90 rpm

## FILLING CAPACITIES

Fuel Tank	: 345 L	Engine Oil	: 21 L
Hydraulic Tank	: 165 L	Engine Cooling Sys	: 33 L
Hydraulic System	: 318 L		

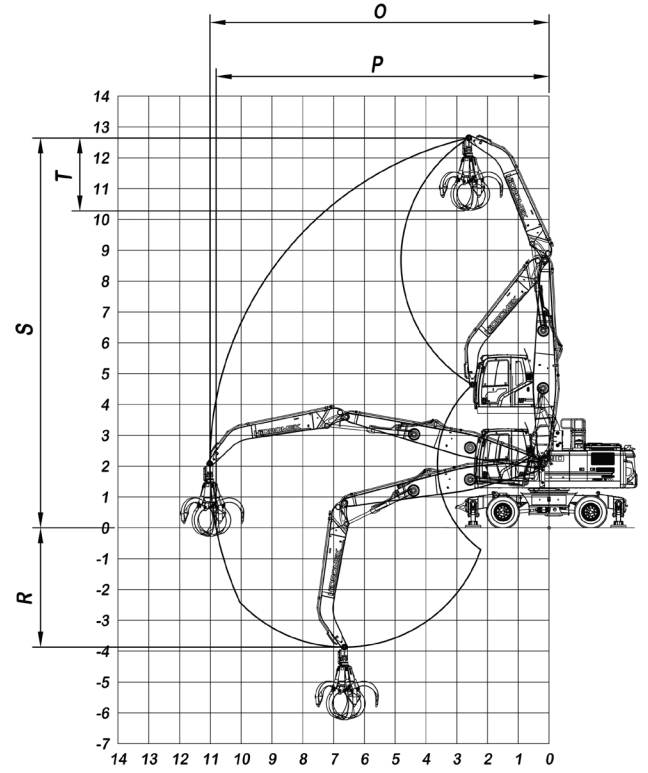
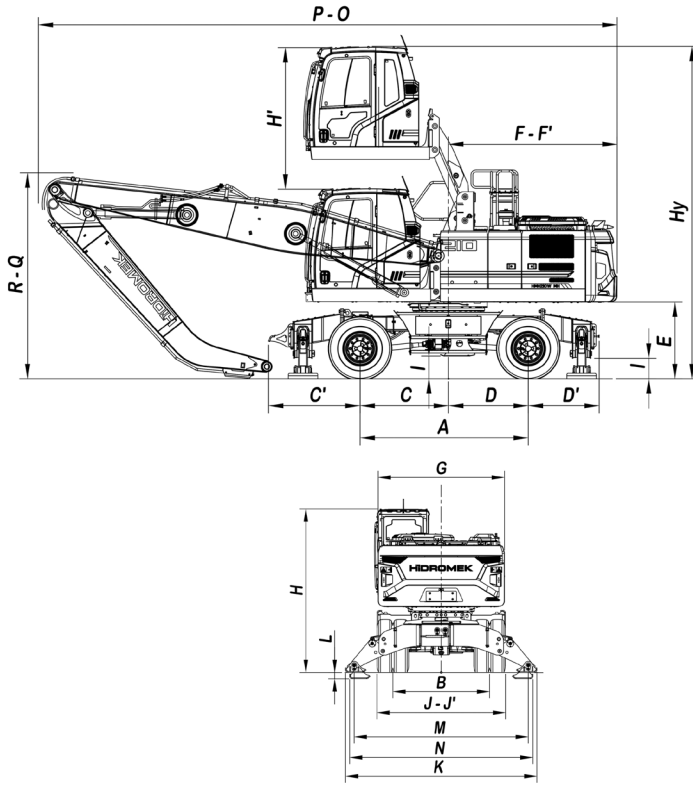
## ELECTRICAL SYSTEM

Voltage	: 24V
Battery	: 2 x 12V x 100 Ah
Alternator	: 24V / 50 A
Starting Motor	: 24V / 5 kW

## OPERATING WEIGHT

Standard machine operating weight	: 24.350 kg
-----------------------------------	-------------

Operational weight, complying with the ISO 6016 standards, includes full fuel tank, hydraulic system and other liquids, 75kg operator weight and standard equipped machine weight. Optional equipments are not included.



## GENERAL DIMENSIONS

Boom Dimension (MH Boom)	6.600 mm
Arm Dimension (Dropnose/MH Arm)	4.600 mm
A Axle Distance	2.850 mm
B Thread width	1.915 mm
C Rotation Axis - Front Axle Distance	1.500 mm
C' Front Axle-Outrigger Max. Distance	1.550 mm
D Rotation Axis - Rear Axle Distance	1.350 mm
D' Rear Axle - Outrigger Distance	1.200 mm
E Upper Chassis to Ground Clearance	1.295 mm
F Counterweight Distance	2.855 mm
F' Counterweight Turning Radius	2.885 mm
G Upper Frame Width	2.500 mm
H Cab Height	3.230 mm
H' Cab Rising Distance	2.400 mm
Hy Total Cab Height	5.640 mm
I Outrigger Ground Clearance	345 mm
I' Ground Clearance	380 mm
J Tyre Width	2.540 mm
J' Over width of O/R Retract	2.500 mm
K Over width of O/R Extend	3.785 mm
L Outrigger Digging Depth	120 mm
M Outrigger Pin Distance (on ground)	3.450 mm
N Over Width OF O/R Extend (Below Ground)	3.630 mm
O Overall Length (Travel)	9.680 mm
P Overall Length / Transport	9.810 mm
Q Boom Height / Travel	4.410 mm
R Boom Height / Transport	3.490 mm

## WORKING DIMENSIONS

Boom Dimension (MH Boom)	6.600 mm
Arm Dimension (Dropnose/MH Arm)	4.600 mm
O Maximum Digging Reach	11.020 mm
P Maximum Digging Reach at Ground Level	10.810 mm
R Maximum Digging Depth	3.870 mm
S Maximum Digging Height	12.650 mm
T Grapple	2.350 mm

## HİDROMEK®

### FACTORY - HEAD OFFICE

Ahi Evran OSB Mahallesi Osmanlı Caddesi No:1 06935 Sincan / ANKARA / TURKEY  
Tel: (+90) 312 267 12 60 Fax: (+90) 312 267 12 39  
www.hidromek.com

Notice:  
Hidromek has the right to modify the specifications and design of the model indicated on this brochure without prior notice.