



NEW!

ENGINE

| | |
|-----------------|---|
| Model | : ISUZU-4HK1X |
| Type | : Water-cooled, 4 cycle, 4 cylinders, line type direct injection, turbocharger, intercooler, electronic diesel engine |
| Power | : 172 HP (128 kW) @2000 rpm / SAE J1995 (Gross) |
| Max. Torque | : 670 Nm @1600 rpm (Gross) |
| Displacement | : 5193 cc |
| Bore and Stroke | : 115 mm x 125 mm |
| Emission Class | : EU: Stage V |

UNDERCARRIAGE

| | |
|---|-------------------------------|
| X Type Lower Frame Construction Pentagon Box Type Chassis | |
| Shoe | : Triple grouser |
| No. Of Shoes | : 2 x 49 |
| No. Of Lower Rollers | : 2 x 9 |
| No. Of Upper Rollers | : 2 x 2 |
| Track Tensioning | : Hydraulic Spring Tensioning |

CAB

- Improved operator's all round visibility
- Increased cabin internal space
- Use of six viscomount cabin mountings that dampen the vibrations
- High capacity A/C
- High resolution, led backlight, color LCD display
- Opera Control System
- Cooled storage room
- Glass holder, book and object storage pockets
- Pool type floor mat
- Improved operator's comfort through versatile adjustable seat
- Ergonomically redesigned cabin through relocated switch board, and re-styled travel pedals and joysticks.

SWING SYSTEM

| | |
|--------------|---|
| Swing Motor | : Axial piston type integrated with shock absorber valves |
| Reduction | : 2 stage planetary gear box. |
| Swing Brakes | : Hydraulic multi disc type, automatic warnings |
| Swing Speed | : 11,9 rpm |

TRAVEL AND BRAKERS

| | |
|-------------------------------|-----------------------------|
| Travel | : Fully hydrostatic |
| Travel Motors | : Axial piston type |
| Reduction | : 2 stage planetary gear |
| Travel Speed | |
| High Speed | : 5,8 km/h |
| Low Speed | : 3,8 km/h |
| Max. Drawbar Pull | : 18.310 kgf |
| Gradeability | : 35° (%70) |
| Parking Brake | : Hydraulic multi disc type |
| Ground Pressure (600mm Shoe): | : 0,50 kgf/cm ² |

HYDRAULIC SYSTEM

| | |
|----------------------|---|
| Main Pump | |
| Type | : Double variable displacement axial piston pumps |
| Max. Flow | : 2 x 221 L/min |
| Pilot Pump | : Gear, 20 L/min |
| Relief Valves | |
| Attachment | : 350 kgf/cm ² |
| Power Boost | : 370 kgf/cm ² |
| Travel | : 350 kgf/cm ² |
| Swing | : 306 kgf/cm ² |
| Pilot | : 40 kgf/cm ² |
| Cylinders | |
| Main Boom | : 2 x ø 120 x ø 85 x 1.300 mm |
| Stick Cylinder | : 1 x ø 135 x ø 95 x 1.520 mm |
| Bucket Cylinder | : 1 x ø 120 x ø 85 x 1.060 mm |

OPERA CONTROL SYSTEM

- Easy-to-use control panel and menu
- Improved fuel economy and productivity
- Maximum efficiency by selection of power and work modes
- Overheat prevention and protection system without interrupting the work
- Automatic powerboost switch-on and switch-off
- Automatic electric power-off
- Maintenance information and warning system
- Error mode registry and warning system
- Ability to adjust hydraulic flow from Opera screen
- Maintenance information and warning system
- Automatic powershift to improve performance
- Selection of multi-language on control panel.
- Real time monitoring of operational parameters such as pressure, temperature, engine load
- Anti-theft system with personal code
- Possibility to register 27 different operating hours
- Rear-view, arm-view camera (Optional)
- HIDROMEK Smartlink (Optional)

CAPACITY

| | | | |
|------------------|---------|-----------------------|----------|
| Fuel Tank | : 405 L | Engine Cooling System | : 33 L |
| Hydraulic Tank | : 152 L | Engine Oil | : 19,3 L |
| Hydraulic System | : 285 L | Urea tank | : 35 L |

ELECTRICAL SYSTEM

| | |
|----------------|---------------------|
| Voltage | : 24V |
| Battery | : 2 x 12 V / 150 Ah |
| Alternator | : 24V / 50 A |
| Starting Motor | : 24V / 5 kW |

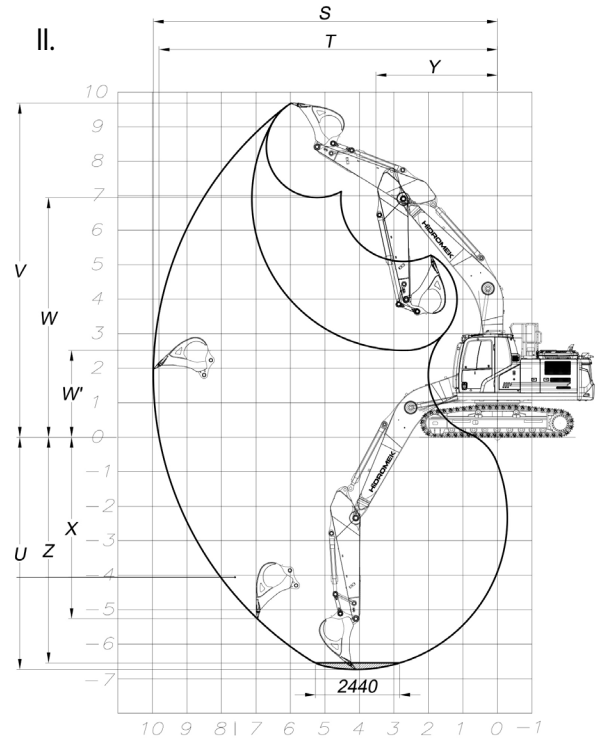
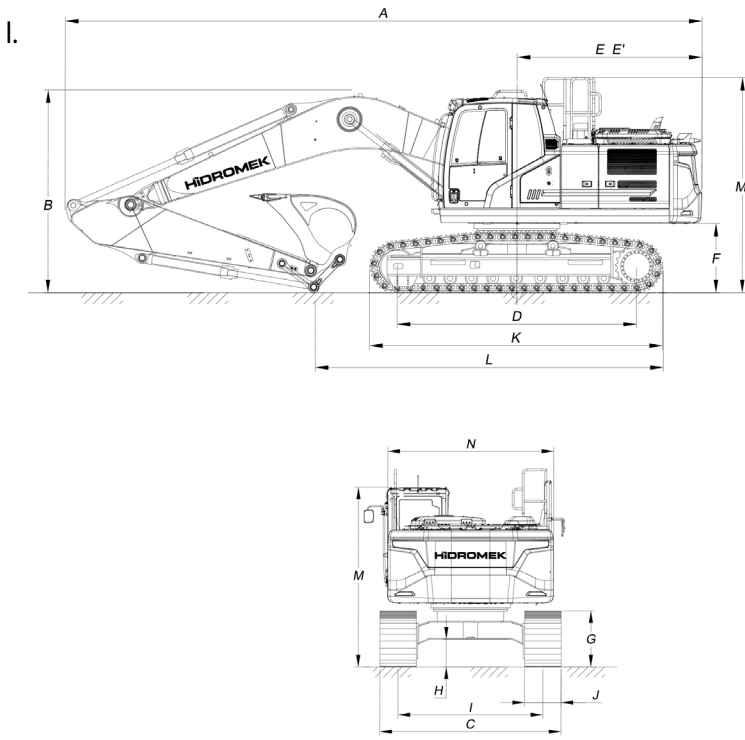
LUBRICATION

Centralized lubrication system is provided for lubrication all difficult-to-reach parts on the components, such as boom and arm

OPERATING WEIGHT

Standard machine operating weight : 23.600 kg

Operational weight, complying with the ISO 6016 standards, includes full fuel tank, hydraulic system and other liquids, 75kg operator weight and standard equipped machine weight. Optional equipments are not included.



I. GENERAL DIMENSIONS

| Boom Dimension | 5.70 mm | |
|--------------------------------------|----------|----------|
| Arm Dimension | *2.92 mm | 2.40 mm |
| A - Overall Length | 9.740 mm | 9.680 mm |
| B - Boom (Shipping) Height | 3.330 mm | |
| C - Lower Frame Width | 2.990 mm | |
| D - Track Base Length | 3.640 mm | |
| E - Counterweight Distance | 2.810 mm | |
| E' - Countweight Turning Radius | 2.830 mm | |
| F - Upper Chasis to Ground Clearance | 1.065 mm | |
| G - Crawler Height | 935 mm | |
| H - Ground Clearance | 465 mm | |
| I - Track Gauge | 2.390 mm | |
| J - Shoe Width | 600 mm | |
| K - Lower Chasis Length (from shoe) | 4.460 mm | |
| L - Shipping Length | 5.320 mm | 5.920 mm |
| M - Cab Height | 3.010 mm | |
| N - Upper Frame Width | 2.740 mm | |

* Standard

II. WORKING DIMENSIONS

| Boom Dimension | 5.70 mm | |
|---|----------|----------|
| Arm Dimension | *2.92 mm | 2.40 mm |
| S - Maximum Reach Distance | 9.980 mm | 9.560 mm |
| T - Maximum Reach at Ground Level | 9.810 mm | 9.390 mm |
| U - Maximum Digging Depth | 6.730 mm | 6.210 mm |
| V - Maximum Digging Height | 9.680 mm | 9.620 mm |
| W - Maximum Unloading Height | 6.950 mm | 6.840 mm |
| W' - Minimum Unloading Height | 2.520 mm | 3.040 mm |
| X - Maximum Vertical Wall Digging Depth | 5.250 mm | 5.050 mm |
| Y - Minimum Swing Radius | 3.520 mm | 3.550 mm |
| Z - Maximum Digging Depth (2440 mm level) | 6.540 mm | 6.010 mm |

* Standard

III. DIGGING PERFORMANCE

| | |
|--|---------------------|
| Standard Bucket Capacity (SAE) | 1,10 m ³ |
| Bucket Digging Force (Power Boost) ISO | 14.900 (15.800) kgf |
| Arm Crowd Force (Power Boost) ISO | 10.400 (10.900) kgf |



HİDROMEK®

FACTORY - HEAD OFFICE

Ahi Evran OSB Mahallesi Osmanlı Caddesi No:1 06935 Sincan / ANKARA / TÜRKİYE
 Tel: (+90) 312 267 12 60 Fax: (+90) 312 267 12 39
www.hidromek.com

Notice:
 Hidromek has the right to modify the specifications and design of the model indicated on this brochure without prior notice.